

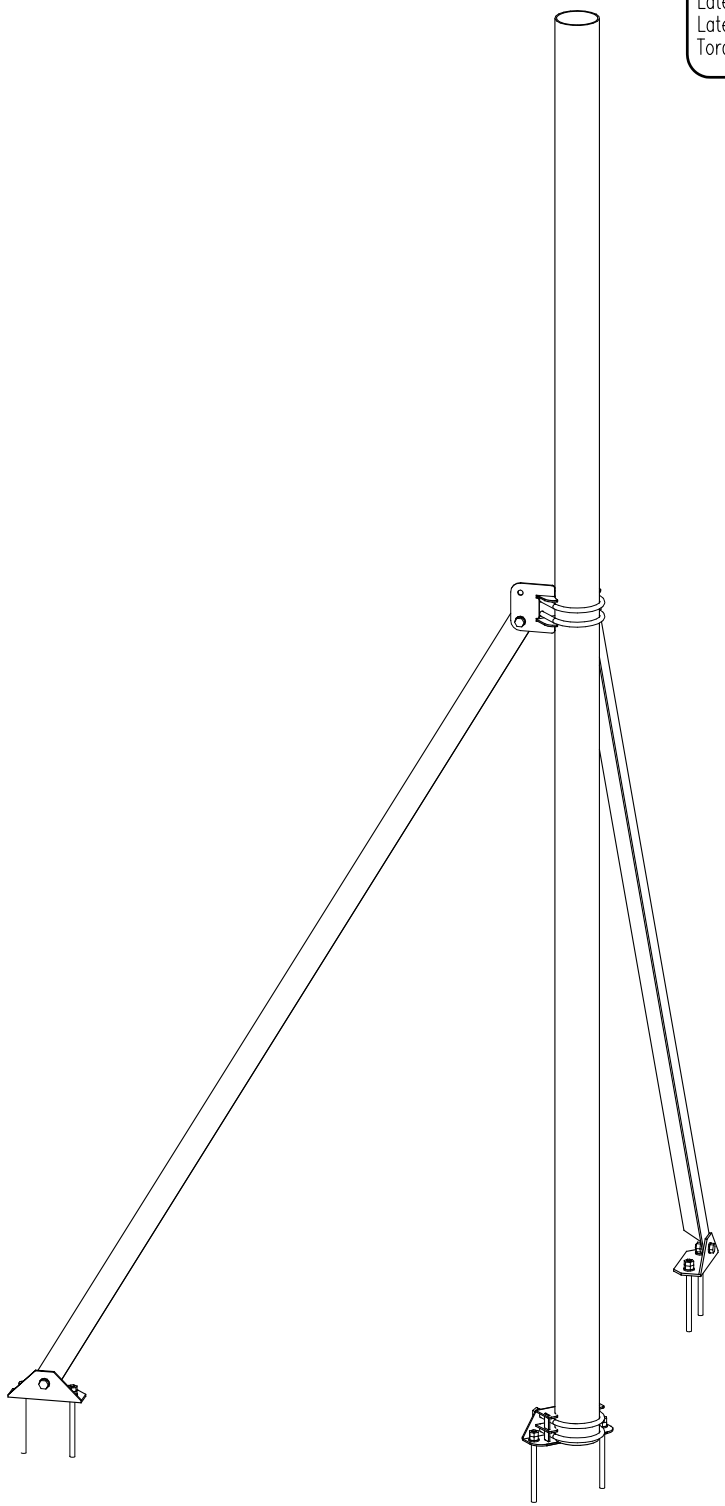
**Note:**

- Values stated in Specifications are for bracket only, tower structure to be checked for additional loading before installation
- All items finish hot dip galvanized
- All fasteners M10 Grade 8.8 HDG.
- All fasteners to be torqued 45Nm ( $\pm 10\%$ )
- Weight of bracket incl. fasteners = 36.651kg

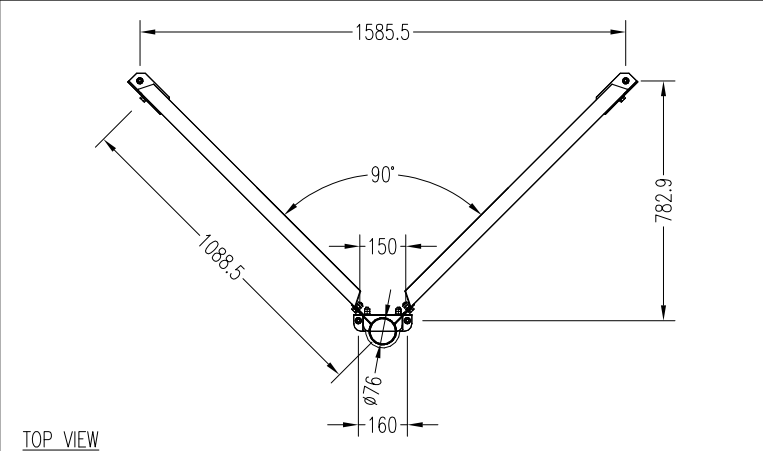
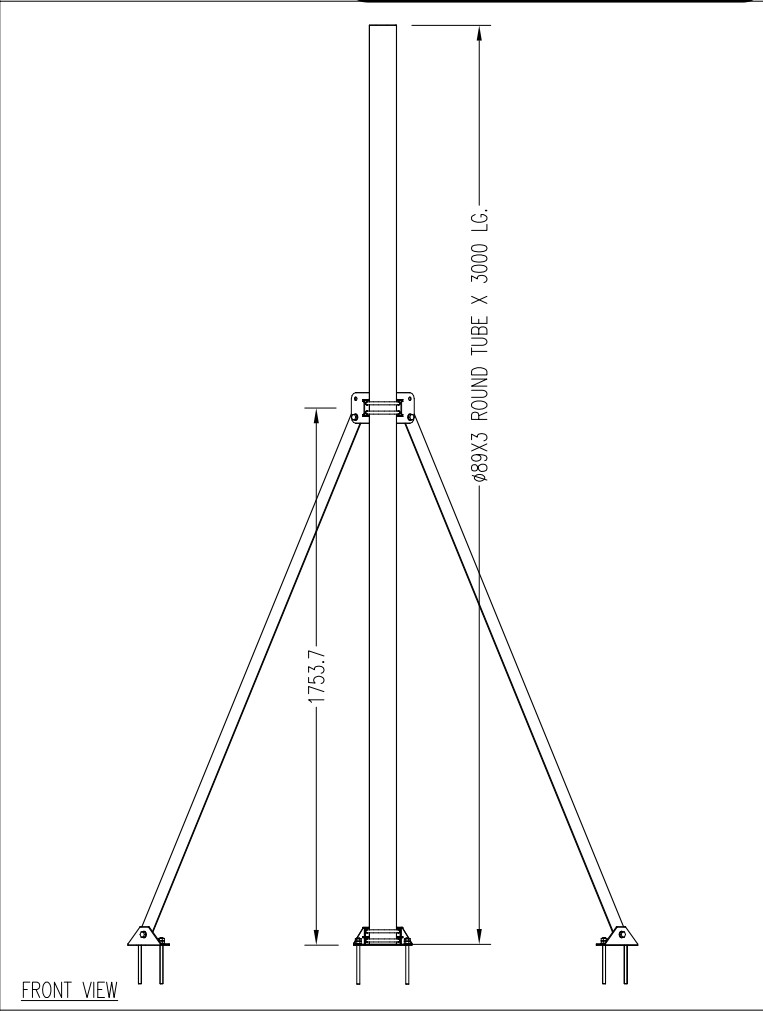
Specifications	
Design Criteria	
SANS 10160(Wind load)   SANS 10162(Structural)	
Safe work load	
Dead weight	A 120kg
Lateral loading (Front) Combined	B 80kg
Lateral loading (Side) Combined	C 80kg
Lateral loading (Back) Combined	D 80kg
Torque (On tubing)	E 1200Nm

Parts list	
Qty/Description	Part number
1x3m $\varnothing 89$ pole	RTU209
1xBottom support bracket	GR112/502/01-00
1xTop support bracket	GR112/502/02-00
2xStays	GR112/501/03-00
2xStay to ground bracket	GR112/501/04-00

Fasteners list	
Description	Qty
M10X30 HDG Setscrew	4
M10 Hex nut	24
M10 Flat washer	16
M10 X $\varnothing 89$ U-Bolt	4



ISOMETRIC VIEW (Typical installation)



TOP VIEW



**Graffo** Innovative wireless infrastructure solutions

89 Floor mount with support arms  
Part no. : GR112-502-00-00B