

**Note:**

- . Values stated in Specifications are for bracket only, tower structure to be checked for additional loading before installation
- . All items finish hot dip galvanized
- . All fasteners M10 Grade 8.8 HDG.
- . All fasteners to be torqued 45Nm ( $\pm 10\%$ )
- . Weight of bracket incl. fasteners =9.010 kg. (Set of 2)

**Specifications**

Design Criteria

SANS 10160(Wind load) | SANS 10162(Structural)

Safe work load

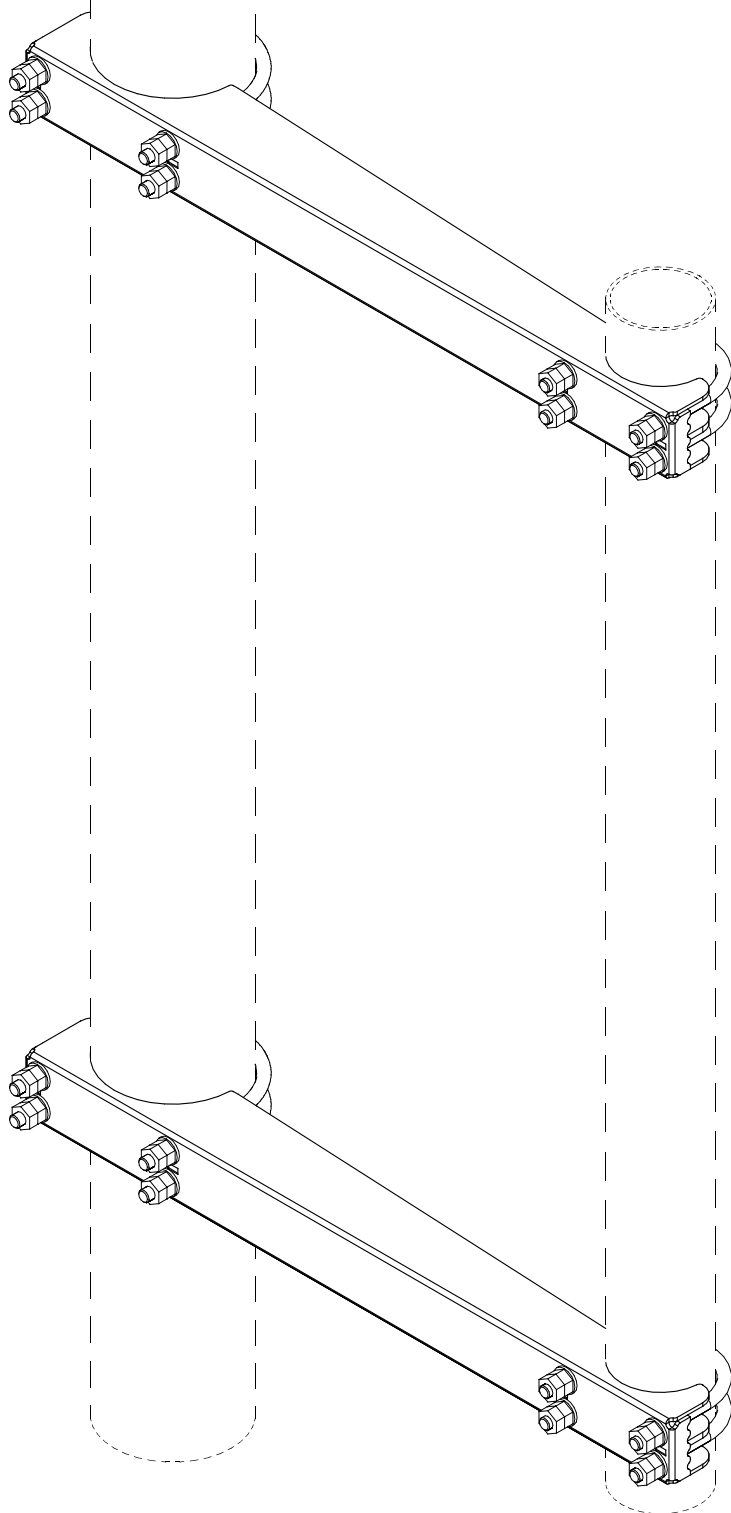
Dead weight	A	120kg
Lateral loading (Front) Combined	B	180kg
Lateral loading (Side) Combined	C	80kg
Lateral loading (Back) Combined	D	180kg
Torque (On tubing)	E	240Nm

**Parts list**

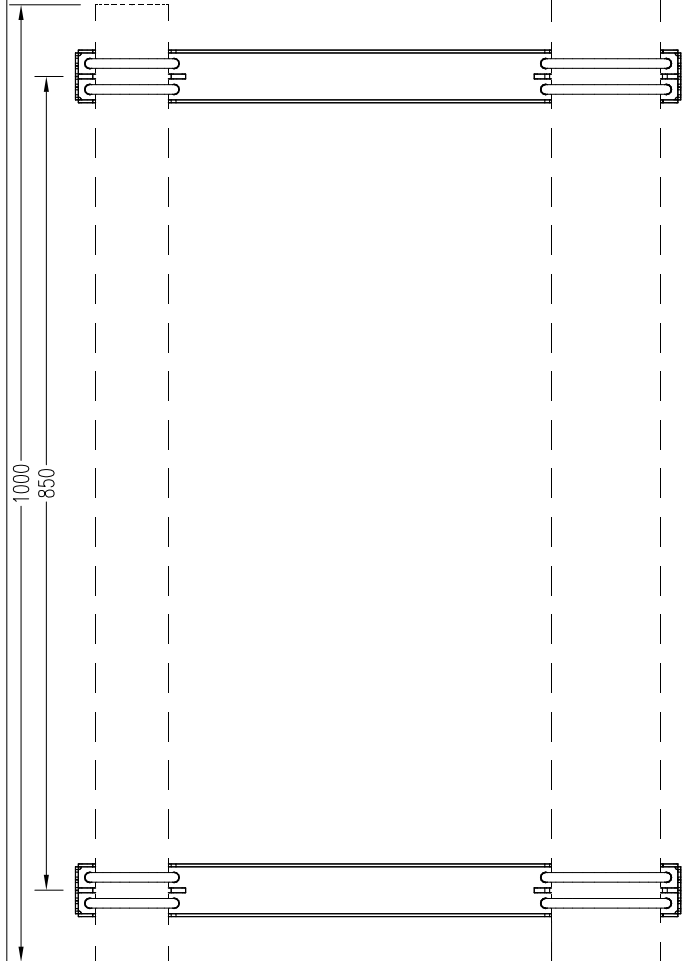
Qty/Description	Part number
2x $\phi 114-\phi 76$ Pole to pole	GR112/014/01-00

**Fasteners list**

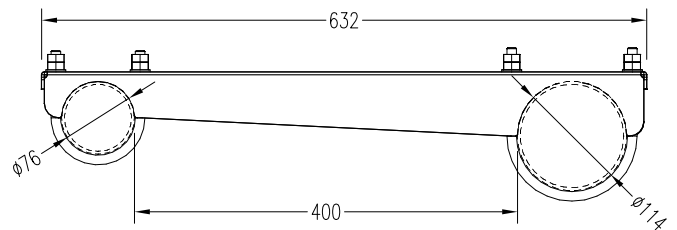
Description	Qty
M10 X $\phi 76$ U-Bolt	4
M10 X $\phi 114$ U-Bolt	4
M10 Hex nut	32
M10 Flat washer	16



ISOMETRIC VIEW (Typical installation)



SIDE VIEW



**Graffo** Innovative wireless infrastructure solutions

$\phi 114-\phi 76$ , 400 stand-off Pole to Pole bracket  
Part no. : GR112-014-00-00A

Tel: +27 (0)21 905-0010

Fax: +27 (0)21 905-0020

Web: www.graffo.co.za